



# MINERVA

## PE0403 Converter Card

---

### Performance & Burn In Test Rev. 1. 0

#### Table of Contents

---

---

#### 1. Overview

#### 2. Performance Measurement Tools and Results

2.1 Test Platform

2.2 Test target and M.2 NVMe SSD

2.3 Install Hardware

2.4 BIOS & Windows 8.1 OS environment setup

2.5 CrystalDiskMark 5.0.2 x64 performance test

2.6 AS SSD Benchmark 1.7 performance test

2.7 ATTO Disk Benchamrk 2.47 performance test

2.8 AnvilBenchmark\_V110\_B337 Benchmark performance test

#### 3. Burn In Tests and Results

3.1 BurnInTest v8.0 Pro burn in test

#### 4. Summary

# PE0403 Converter Card

## 1. Overview

PE0403 adapter, providing SFF-8643 Mini SAS HD connector can be U.2(SFF-8639)SSD converted into PCI-e Gen 3 / 4 Lanes interface.

## 2. Tools and Results of Performance Measurement

### 2.1 Test Platform

- M/B : ASRock **Z97 Extreme 6**
- CPU : Intel **i5-4426**, 3.2GHz/ 6M Cache/ LGA1150
- Memory : Kingston **KVR16N11S8/4**, DDR3-1600MHz, **8GB**(4GB DIMM\*2)
- ATX Power : FSP RAIDER 550, **550W ATX**, 12V V2.2 Power Supply
- Graphic : Z97 Chipsets built-in **HD Graphics 4600**
- PCIe adapter: PCIe Gen 3/4 Lanes to M.2 & SFF-8643 adapter
- Cable: SFF-8643 to SFF-8639 cable
- OS : Microsoft **Windows 8.1 64bit OS**

### 2.2 Test target: PE0403 adapter & [INTEL 750 U.2\(SFF-8639\) NVMe 400GB SSD](#)



PE0403 Aadapter

### 2.3 Install Hardware

Uses SFF-8643 to SFF-8639 cable to connect intel 750 SSD to PE0403 **PCI-e adapter of Z97 M/B.**

### 2.4 BIOS & Windows 8.1 OS environment setup

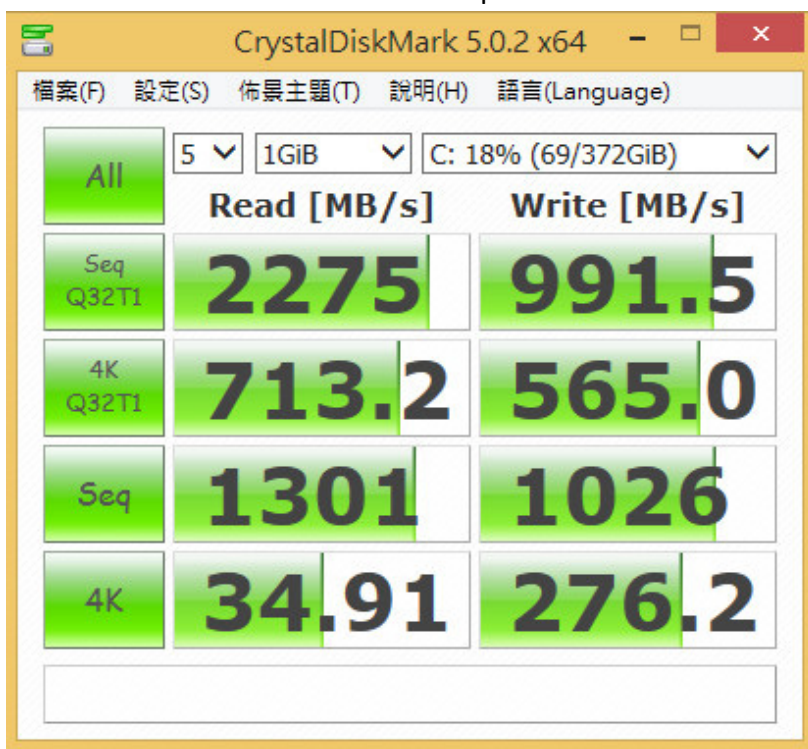
2.4.1 Install Windows 8.1 OS.

## PE0403 Converter Card

### 2.5 CrystalDiskMark 5.0.2 x64 performance test

※Benchmark (Sequential **Read & Write** / default = **1MB**)

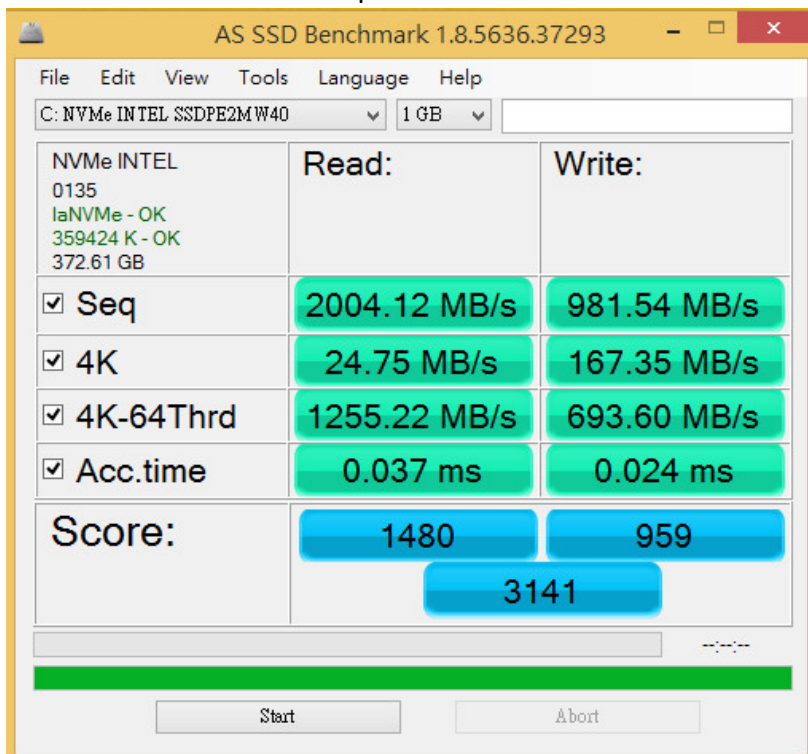
2.5.1 Shows **INTEL 750 M.2 NVMe 400GB** performance as below:



### 2.6 AS SSD Benchmark 1.7 performance test

※Benchmark (**Read & Write** by MB/s, default block size = **16MB**)

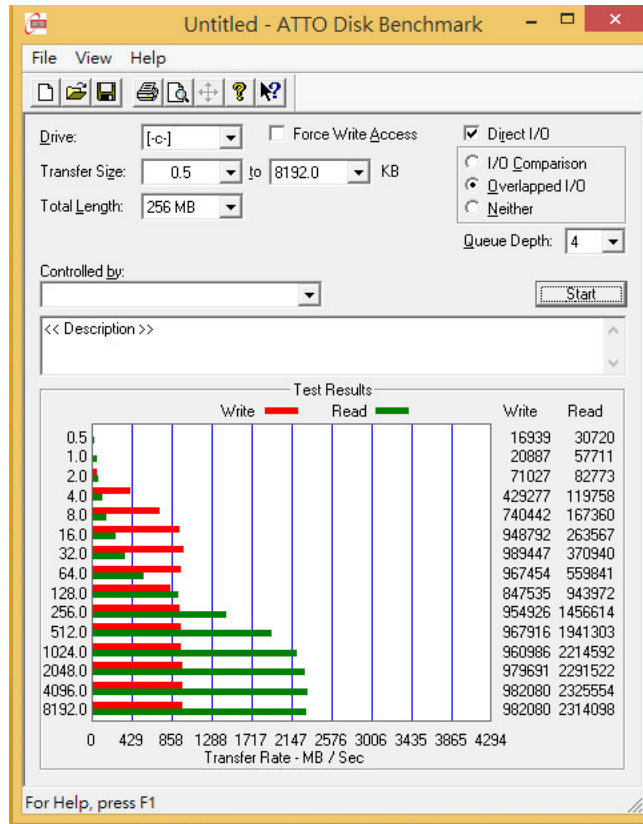
2.6.1 **INTEL 750 M.2 NVMe 400GB** performance as below:



# PE0403 Converter Card

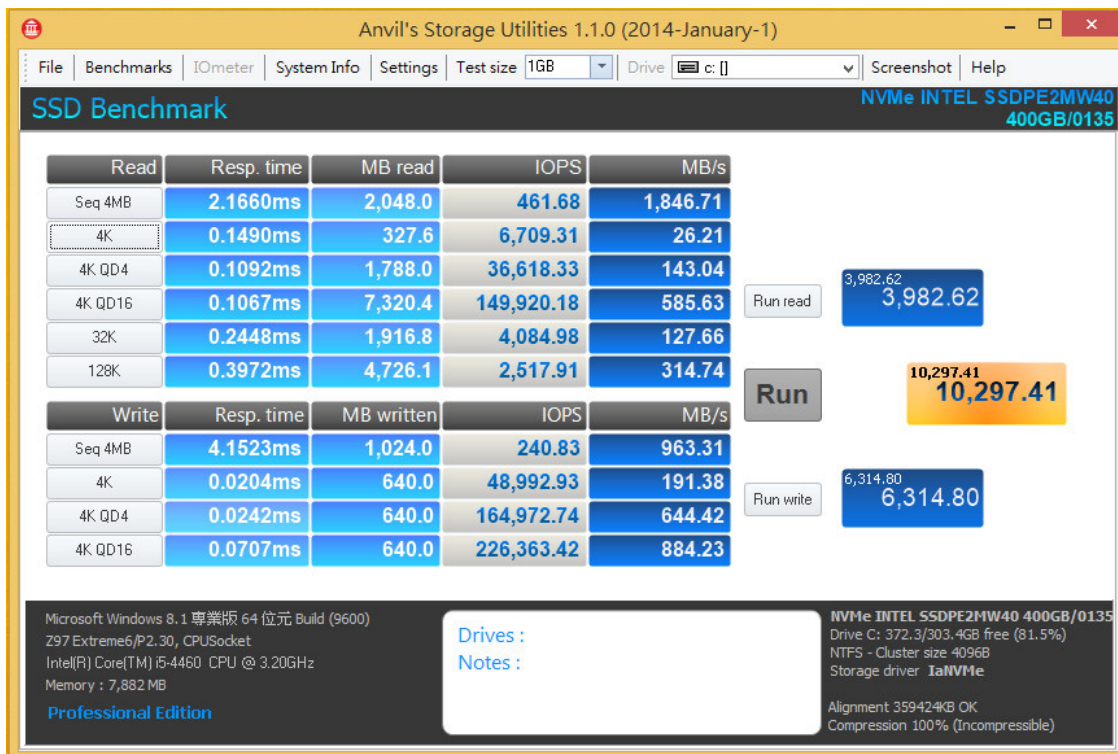
## 2.7 ATTO Disk Benchmark 2.47 performance test

2.7.1 Shows INTEL 750 M.2 NVMe 400GB performance as below:



## 2.8 AnvilBenchmark\_V110\_B337

2.8.1 INTEL 750 M.2 NVMe 400GB performance as below:

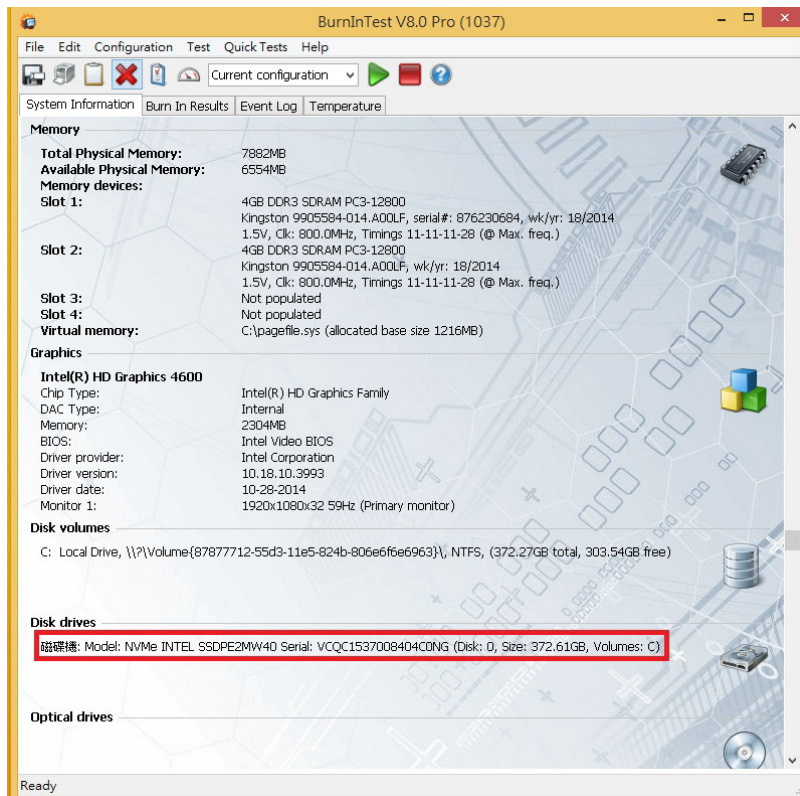
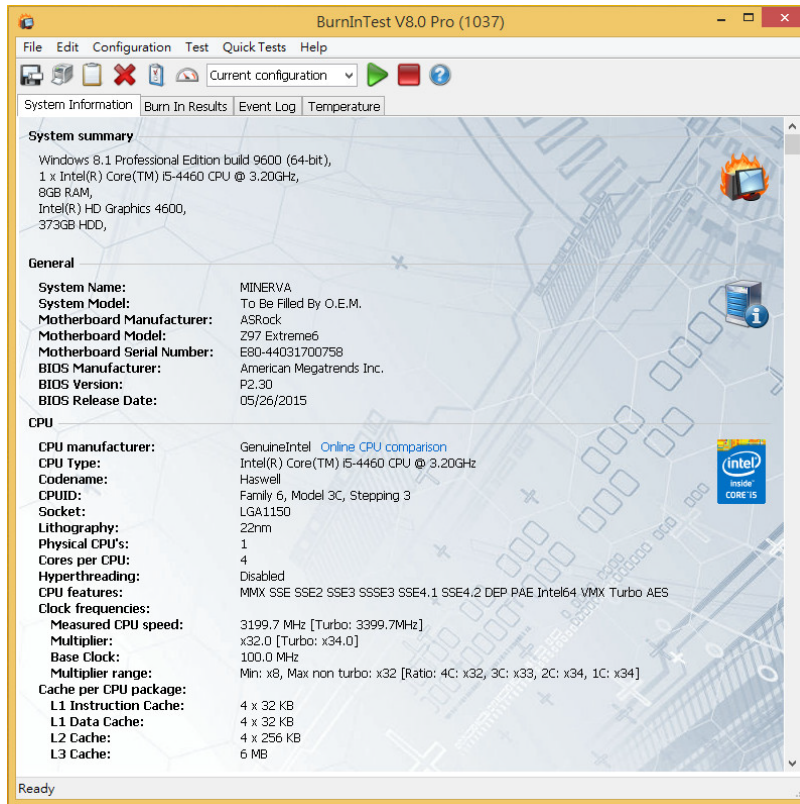


# PE0403 Converter Card

## 3. Burn In Tests and Results

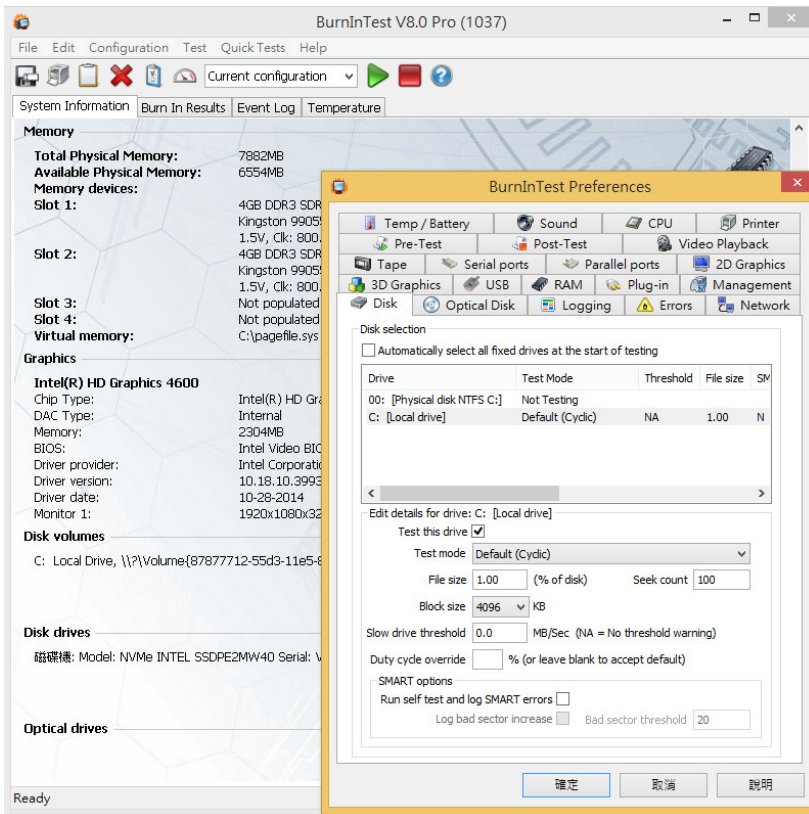
### 3.1 BurnInTest v8.0 Pro for SSD(INTEL 750 / SSDPE2MW40G4)

#### 3.1.1 system information as below:

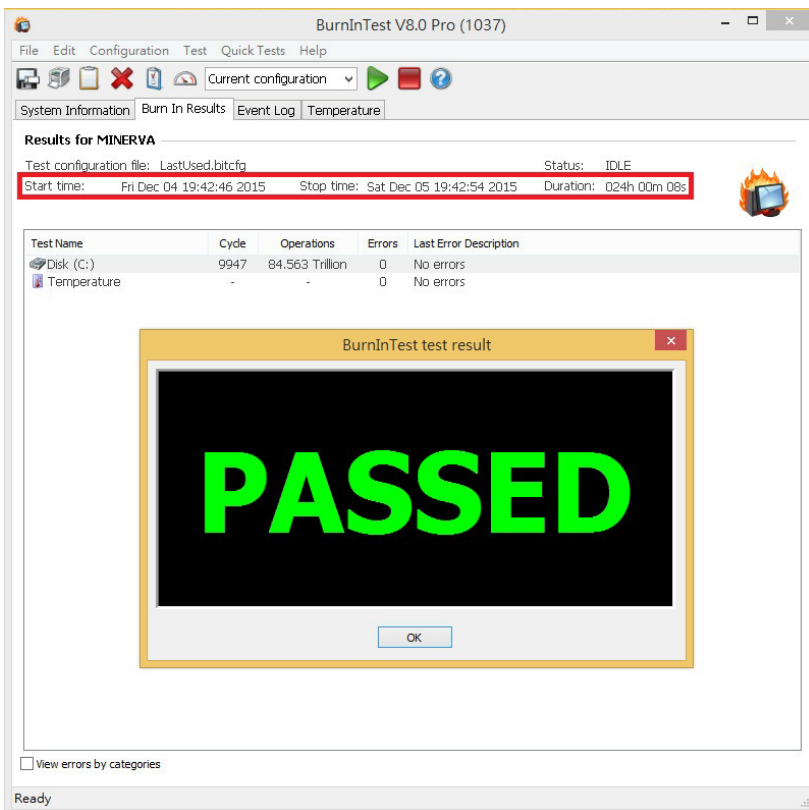


# PE0403 Converter Card

## 3.1.2 show Disk test mode (10 ways cycle test)



## 3.1.3 show 24-hour Burn-in test PASSED



# PE0403 Converter Card

---

## 4. Summary

- 4.1 Intel 750 U.2 NVMe SSD is PCI-e Gen 3 / 4 Lanes Interface, I/O speed, max. to 32Gbps.
- 4.2 PE0403 adapter I/O performance is based on Intel 750 U.2 NVMe SSD.